



## QUANG NINH'S GENERAL OVERVIEW

Quang Ninh Province is located at a strategic location; it is considered as a “small Vietnam”. It is due to the fact that Quang Ninh’s forestry and maritime resources are plentiful, its landscapes are truly impressive; it has border lines both on land and at sea sharing 03 border gates with the People’s Republic of China; its coastal line stretches hundreds of kilometers with Ha Long and Bai Tu Long Bays on a large fishing ground. Quang Ninh is located within Vietnam – China economic cooperation zone “Two corridors, one belt”; a bridge between ASEAN – China and being one of the centers of Vietnam’s Northern key economic zone, etc. Quang Ninh’s natural potential and advantages create opportunities for sustainable economic development in terms of industry; tourism; commercial services in border area; maritime economic development, etc.

Furthermore, Quang Ninh is also the attractive convergence of immeasurable spiritual, cultural and historical values. This is one of the cradles of ancient Vietnamese. To go to Quang Ninh is to visit Yen Tu – Vietnam’s Buddhist Center; to visit Ha Long Bay – twice recognized by UNESCO as world natural heritage in terms of geological, geomorphological and landscape terms; voted by global community as one of the new 7 world’s natural wonders; to visit over 600 historical relics and other famous sceneries. Thanks to the natural advantages, Quang Ninh’s population and society is a combination, convergence, unity of diverse elements of Vietnam’s Red River Civilization. It could be said that its population and natural preferences give Quang Ninh superior advantages in order to develop a sustainable and prosperous green economy.

**Geographical coordinates:** 106°26’ to 108°31’3” east longitude, 20°40’ to 21°40’ north latitude.

**Location:** Northeast Vietnam. Bordered by the People’s Republic of China to the North; bordered by Lang Son province to the West; bordered by Gulf of Tonkin to the East and the South; bordered by Bac Giang Province to the West; bordered by Hai Duong province and Haiphong City to the Southwest.

**Land area:** 6,110km<sup>2</sup>.

**Coastal length:** Over 250km.

**Land border’s length:** Over 118km.

**Population:** About 1.2 million.

**Administration:** 14 administrative units. Being the only province in the country with 04 Provincial cities.

**Province’s capital:** Ha Long City – Cultural, economic and political Center.

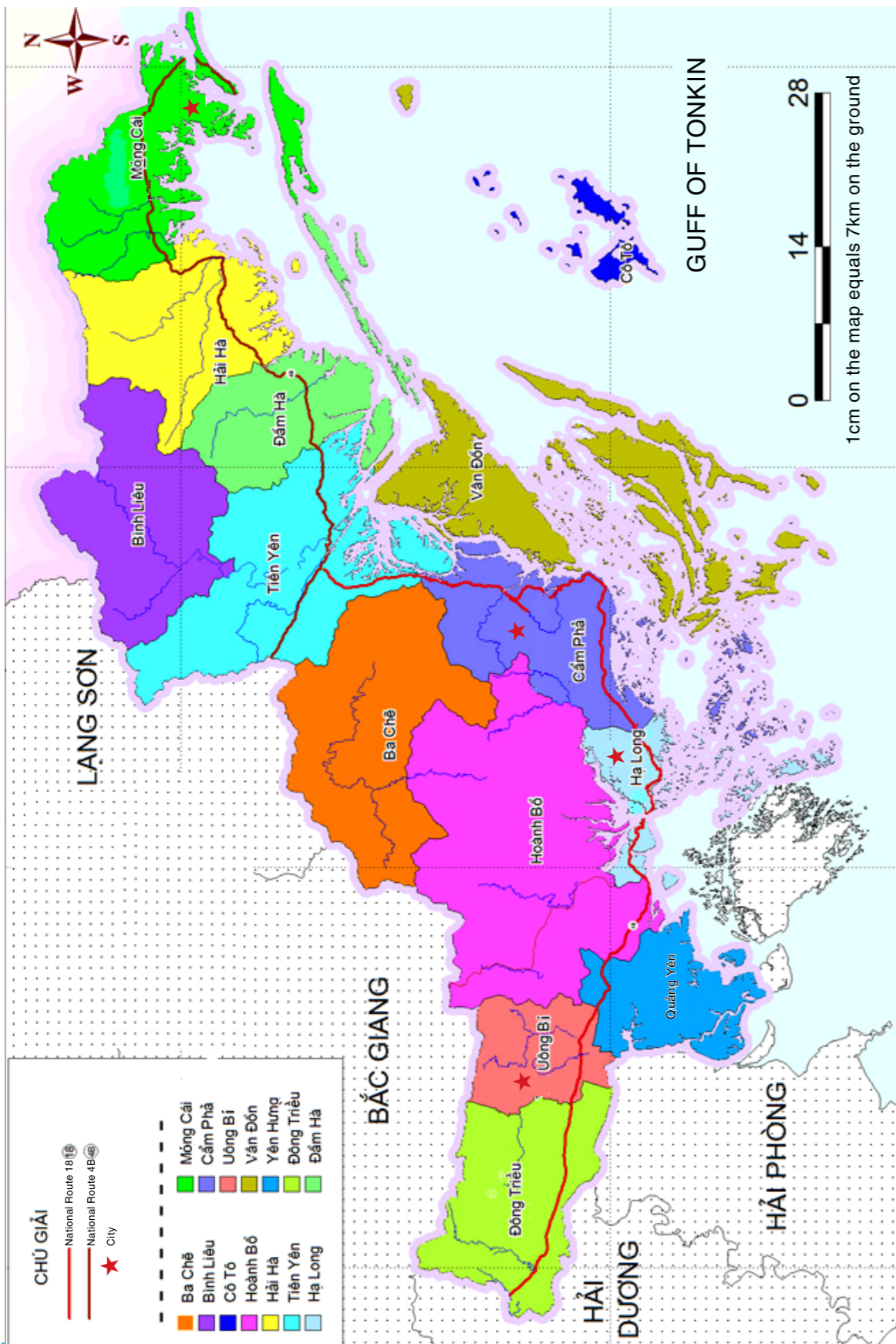
**Climate:** Tropical monsoon.  
Average annual temperature: 21-23°C.

**Humidity**  
Annual average relative humidity: 82 - 85%.

**Rainfall:** 1995mm

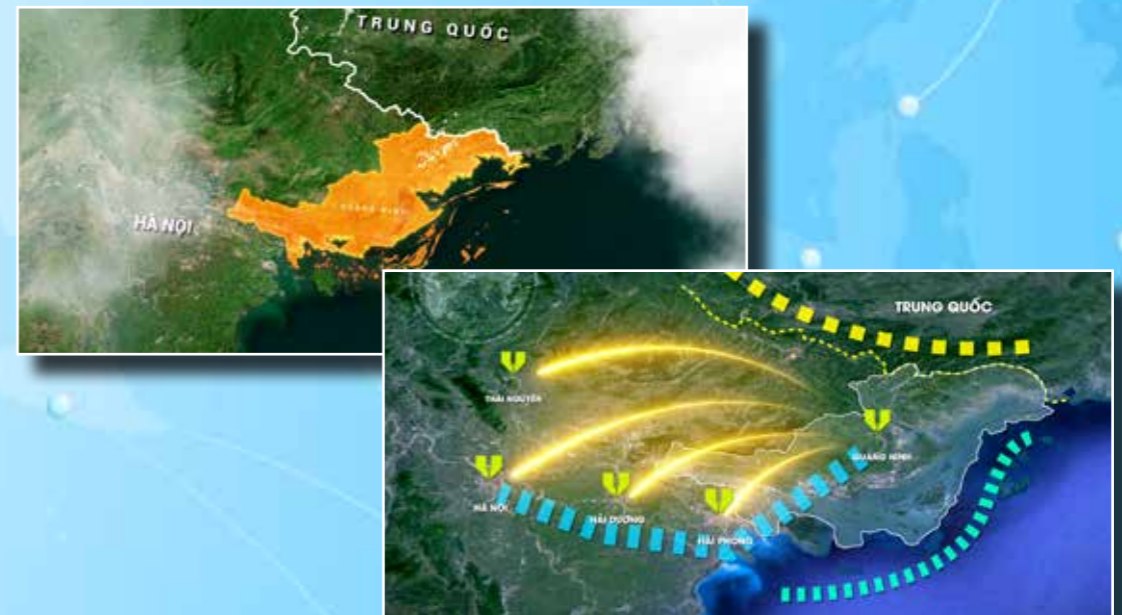
**Ethnic group:** 22 ethnic groups.

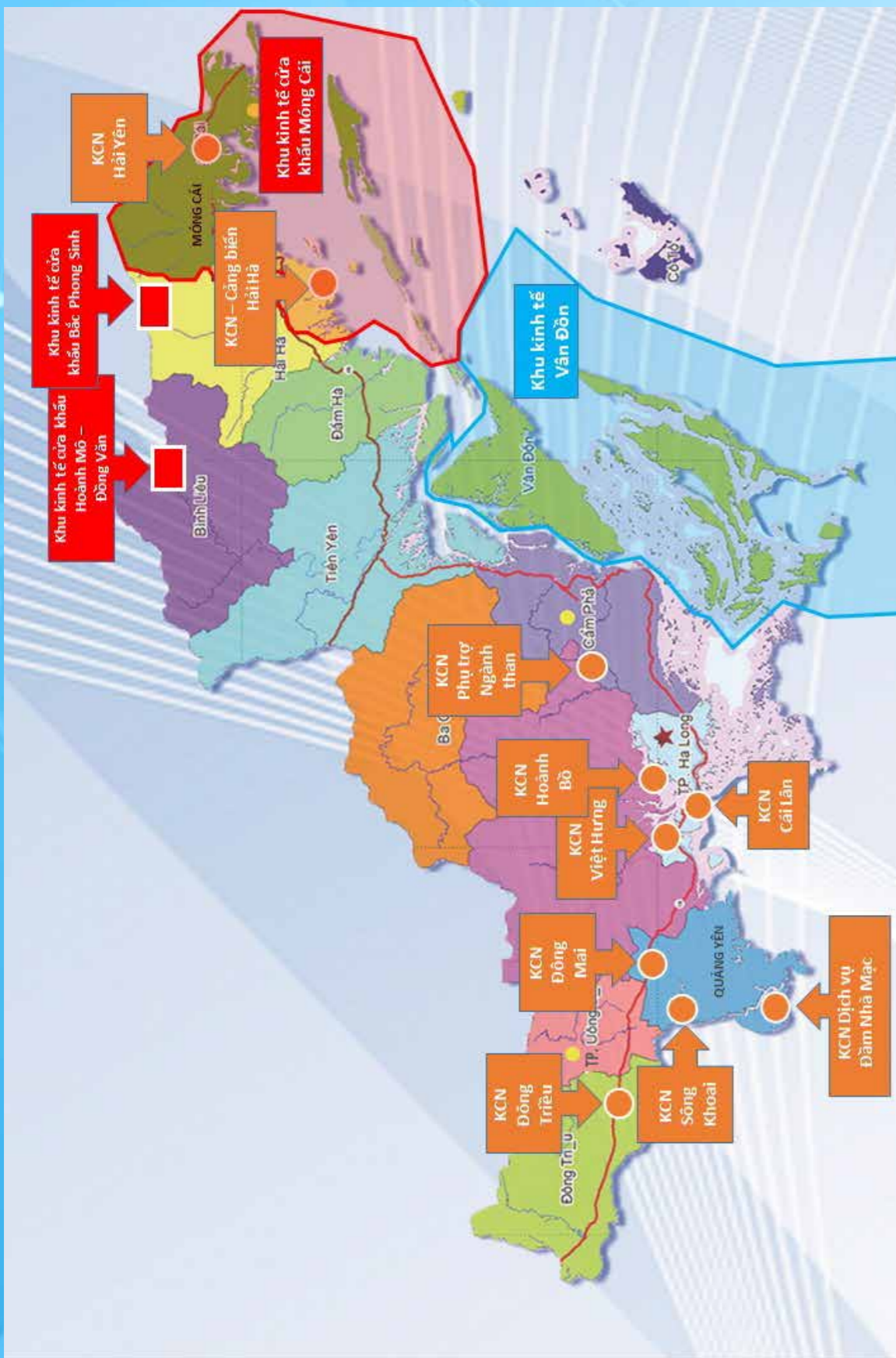
**Language:** Vietnamese.



## QUANG NINH'S ADVANTAGES IN COMPARISON TO OTHER PROVINCES

1. Being the only province in Vietnam with every necessary condition for comprehensive socio-economic development and to be considered as a "small Vietnam".
2. Being the only province which has land, sea and air borders with China. Being Vietnam's most important and active trade gateway with China and ASEAN.
3. With significant natural resources (coal), thermoelectric center of the entire country.
4. The province has unique advantages for tourist development: this is where Bai Tu Long Bay and Ha Long Bay - Natural heritage and one of the new 7 natural wonders of the world - are located. The province also has long traditional culture and history with many famous festivals, historical relics and landmarks such as: Yen Tu, Bach Dang, Cua Ong, Van Don, Tra Co, etc.
5. The province has 250km-long coastal line with more than 2000 islands, accounting for two third of all islands throughout the country, in which over 1000 islands have been named.
6. The Province is designated and approved by the Central Government to experimentally establish Van Don Special Administrative - Economic Unit (being one of the first three Special Administrative - Economic Units in Vietnam).
7. Being the province which fulfilled the Government's Administrative reform scheme at the earliest date, currently the province is implementing and perfecting Electronic Government model, Public Administrative Centers for the Province and all the localities have been formed in order to promote the transparency in processing administrative procedures. The province is consistently among the leading provinces in terms of the Provincial Competitiveness Index - PCI (obtained the 2nd place countrywide in 2016).
8. The province is in the period of golden population with more than 60% of the population in working age, the rate of trained labor is 63% with diligent, creative, disciplined traditions and industrial professionalism.
9. Being one of the leading provinces in total state budget revenue.





## QUANG NINH INDUSTRIAL ZONES

01. Cai Lan Industrial Park  
Area: 245 ha
02. Viet Hung Industrial Park  
Area: 451.89 ha
03. Hoanh Bo Industrial Park  
Area: 136.35 ha
04. Dong Mai Industrial Park  
Area: 158.48 ha
05. Song Khoai Industrial Park  
Area: 714 ha
06. Mac Dynasty Lagoon Service – Industrial Park  
Area: 3.710 ha
07. Dong Trieu Industrial Park  
Area: 150 ha
08. Coal Supporting Industry Park  
Area: 400 ha
09. Hai Ha Seaport – Industrial Park  
Area: 4988 ha
10. Hai Yen Industrial Park  
Area: 182.42 ha



# CAI LAN INDUSTRIAL PARK

## I. General information

- **Location:** Gieng Day and Bai Chay wards, Ha Long city, Quang Minh province.
- **Area:** 245 ha
- **Infrastructure developer:** Quang Ninh Cement and Construction Joint Stock Company
- + **Address:** Hop Thanh Zone, Phuong Nam ward, Uong Bi city, Quang Ninh province
- + **Legal representative:** Mr. Nguyen Xuan Que
- + **Tel:** +84 203 3668 355; **Fax:** +84 203 3668 354
- **Characteristics:** Being the key industrial park of Ha Long City in particular and Quang Ninh province in general with harmonious technical, social infrastructure systems: Waste water treatment system meets the standards, in assurance of environmental requirements; Power and water supply systems ensure the demands by enterprises within the Industrial Park; the Industrial Park's internal transport system, landscape architecture, trees, buildings, workers' quarters are heavily invested, with high quality and professional utilities; being able to create a good, convenient and attractive environment for those who invest in the Industrial Park in assurance of the province's guiding ideology, development orientation, in accordance with the master plan for socio-economic development of the province, its local construction planning and Planning on development of industrial parks, economic zones. In 2017 People's Committee of Quang Ninh province has approved the plan for investment, upgrade, management and operation of Cai Lan Industrial Park in order to become Quang Ninh Province's role model industrial park.

## II. Regional location and relations

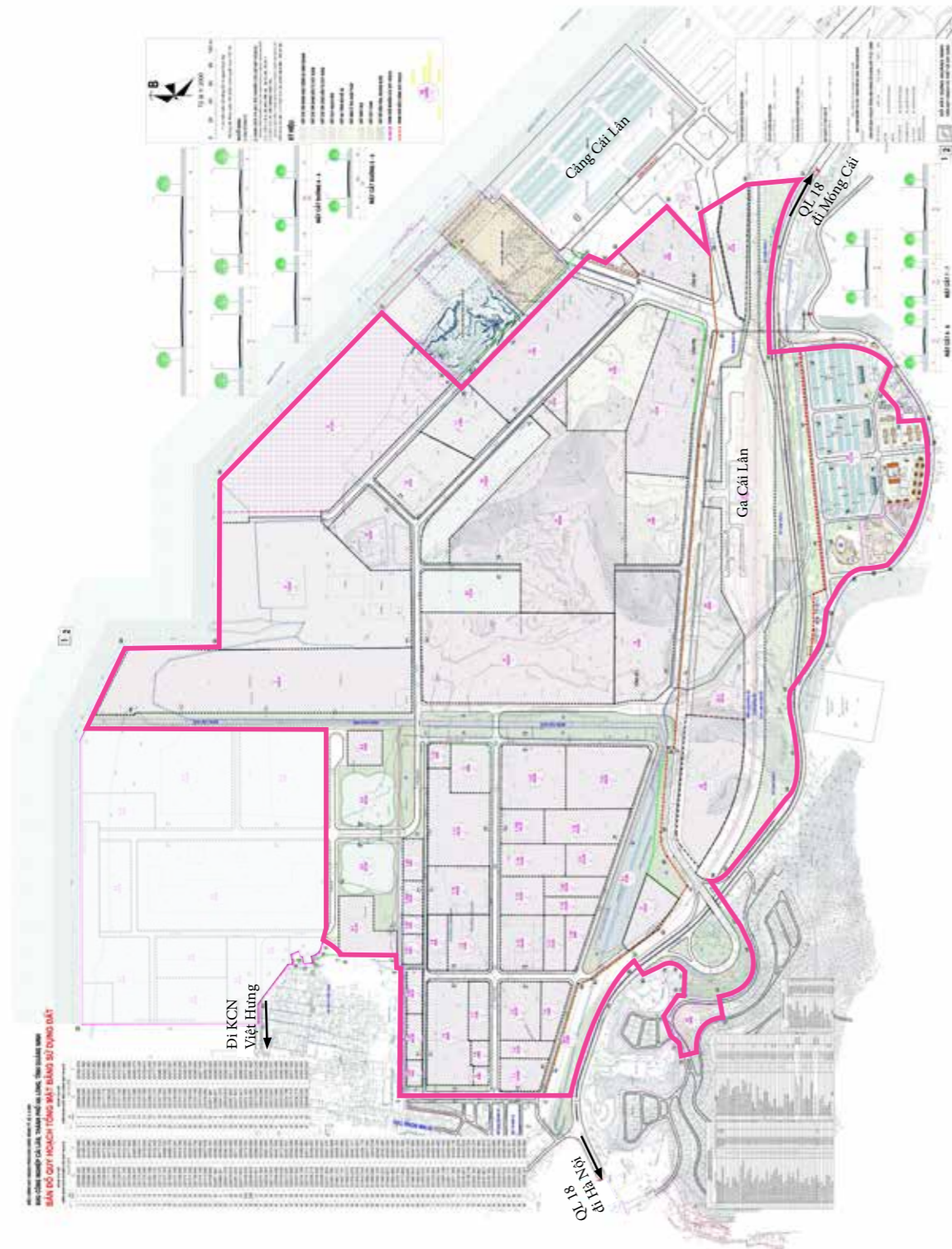
- **Distance from Hanoi city's center:** About 150 km
- **Road:** Located on Highway 18 from Hanoi to Mong Cai International Border Gate. Ha Long - Hai Phong Highway Intersection is about 10 km away.
- **Seaport:** Bordered by Cai Lan port (Ha Long, Quang Ninh); About 35km from Dinh Vu port (Haiphong City)
- **Airport:** About 140km from Noi Bai airport (Hanoi); About 40 km from Cat Bi airport (Haiphong); About 50 km from Van Don airport (Quang Ninh)
- **Railway:** Cai Lan Station and Yen Vien railway network (Ha Noi – Pha Lai – Ha Long – Cai Lan)



## III. Technical infrastructure

- **Internal transport:** The traffic system is designed under a chessboard-like network. The transport network is arranged in accordance with scale of each area to ensure convenient connecting capability between the areas and between roads and waterways.
- **Power supply:** High-voltage power supply is from the readily available 110KV power line; from the intermediate substation, the power is delivered to distribution substations to supply areas of the Industrial Park. Low-voltage cable network is routed from substation's low-voltage cabinet via the tech trench to the distribution cabinets in workshops and to distribution cabinets in production areas.
- **Water supply:** From the water supply source for Western Ha Long.
- **Drainage system, waste/waste water treatment system:** Planning for rainwater drainage system is independent from the waste water treatment system; 02 Concentrated waste water treatment stations with total capacity of 22,000 m<sup>3</sup>/day are arranged for collection, treatment of wastewater of the entire industrial park. Post-treated wastewater shall meet the requirements of standards and regulations before being discharged into the environment; domestic solid wastes (CTRs) are collected and categorized into organic and non-organic CTRs, these two types shall be stored in separate bags. Non-organic CTRs are regularly collected and recycled as much as possible. Organic CTRs are daily collected and treated at the city's general CTR treatment area. Industrial CTRs are categorized, collected and treated up to the standards before being buried according to regulations.

**1:2000-SCALE SUBDIVISION PLANNING OF CAI LAN INDUSTRIAL PARK  
MAP OF LAND USE MASTER PLAN**



# VIET HUNG INDUSTRIAL PARK

## I. General Information

- **Location:** Viet Hung ward, Ha Long city, Quang Ninh province. Bordered by Troi River to the East, bordered by the transport network linking Troi – Vu Oai road with National Route No. 18 section runs through Viet Hung industrial park to the West, bordered by the Land lot designated as Urban Area under Ha Long city's overall Planning to the South, bordered by route 328 to the North.

- **Area:** In phase 1 the area is 151.89 ha (including 1.66 ha of land for general technical infrastructure), now is with infrastructure developer; Phase II has an area of 300 ha, being designated as clean, high-tech Industrial Park

**Infrastructure developer of the Industrial Park in phase I:** Viet Hung Industrial Park Development Joint Stock Company.

+ **Address:** Viet Hung Ward, Ha Long city, Quang Ninh province.

+ **Legal representative:** Mr. Do Hung Tien

+ **Tel:** +84 203 369 5088; **Fax:** +84 203 369 5089;

- **Characteristics of the Industrial Park in phase I:** Being an industrial park with clean industries, no environmental pollution and auxiliary services are available for the operation of the Industrial Park with flexible development, investment is synchronous, convenient and safe for investors, in harmony with the surrounding urban areas

## II. Regional location and relations

- **Distance from Hanoi city's center:** About 150 km

- **Distance from center of Ha Long city, Quang Ninh province:** About 15 km

- **Road:** Located on National Route No. 279; about 06 km from National Route No. 18A; Located aside Ha Long – Van Don Highway (about 01 km from Viet Hung Intersection).

- **Seaport:** About 11 km from Cai Lan port (Ha Long, Quang Ninh); about 30 km from Dinh Vu port (Hai Phong city).

- **Airport:** About 145 km from Noi Bai airport (Hanoi); About 35 km from Cat Bi airport (Haiphong); About 60 km from Van Don airport (Quang Ninh)

- **Railway:** About 07 km from Ha Long and Cai Lan Stations (Ha Long, Quang Ninh).



### III. Technical infrastructure

- **Internal transport:** The traffic system is designed under a chessboard-like network. The transport network is arranged in accordance with scale of each area to ensure convenient connecting capability between the areas and between roads and waterways.

- **Power supply:**

+ High-voltage power supply is from the readily available 110 KV power line; from the intermediate substation, the power is delivered to distribution substations to supply areas of the Industrial Park.

+ Low-voltage cable network is routed from substation's low-voltage cabinet via the tech trench to the distribution cabinets in workshops and to distribution cabinets in production areas.

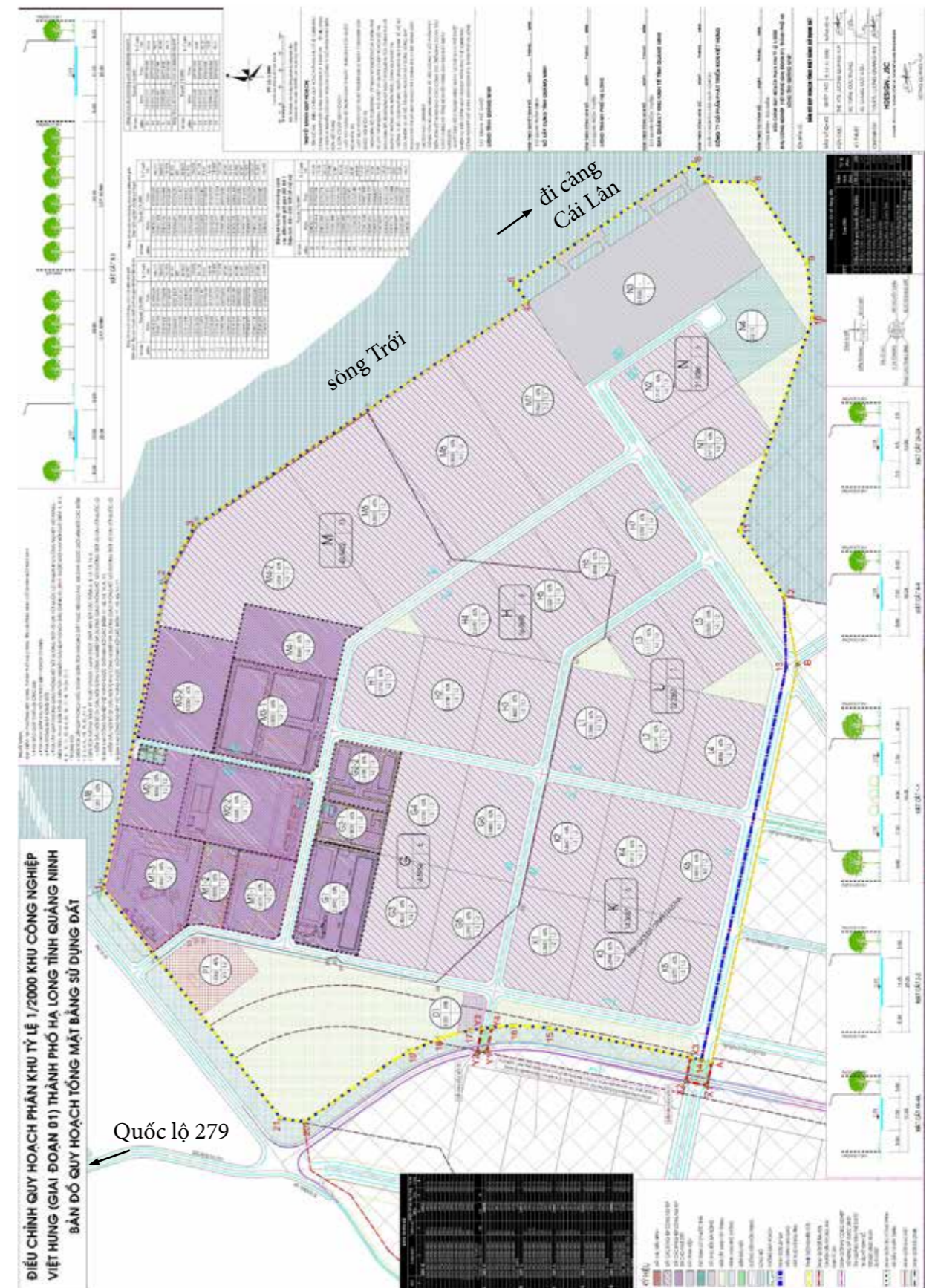
- **Water supply:** from Dong Ho Water Plant.

- **Drainage system, waste/waste water treatment system:**

+ Planning for rainwater drainage system is independent from the waste water treatment system;

+ 01 Concentrated waste water treatment station with a capacity of 1,800 – 2,000 m3/day is arranged for collection, treatment of wastewater of the entire industrial park. Post-treated wastewater shall meet the requirements of standards and regulations before being discharged into the environment;

+ Domestic solid wastes (CTRs) are collected and categorized into organic and non-organic CTRs, these two types shall be stored in separate bags. Non-organic CTRs are regularly collected and recycled as much as possible. Organic CTRs are daily collected and treated at the city's general CTR treatment area. Industrial CTRs are categorized, collected and treated up to the standards before being buried according to regulations.



# HAI YEN Industrial Park

## I. General Information:

- **Location:** Hai Yen ward, Mong Cai city, Quang Ninh province. Within Mong Cai Border Gate Economic Zone
- **Infrastructure developer:** Viglacera Infrastructure Investment Development Company
- + **Address:** 12th Floor, Viglacera Building, No. 1 Thang Long Boulevard, Me Tri Ward, Nam Tu Liem District, Hanoi City.
- + **Tel:** +84 24 3553 7888; **Fax:** +84 24 3553 7166
- **Area:** 182.42 ha
- **Characteristics:** Non-polluting diversified industrial park includes industries of consumer goods production; textile; machine installation; exact mechanics; processing of agricultural and forest products; construction materials; Food Processing.



## II. Regional location and relations:

- **Distance from Hanoi center:** About 310 km
- **Distance from center of Ha Long city, Quang Ninh province:** About 150 km
- **Distance from Mong Cai International Border Gate:** About 06 km
- **Road:** Located on National Route No. 18, linking Hanoi – Quang Ninh (Vietnam) – Guangxi (China).
- **Seaport:**
  - + About 30km from Hai Ha seaport (Hai Ha district) (Under planned shipload receipt: 30,000-80,000 DWT; Capacity: 30-45 million tons/year).
  - + About 50km from Fangchenggang (Guangxi – China).
- **Airport:**
  - + About 270 km from Noi Bai airport (Hanoi).
  - + About 80 km from Van Don airport (Quang Ninh).
- **Railway:** About 170 km from Ha Long station (Ha Long city).

## III Technical infrastructure

- **Internal transport:** Being designed in form of squares to facilitate the categorization of function areas within the Industrial Park, convenient for development of land plots. The main road of the Industrial Park is 33m wide; the ring road inside the Industrial Park is 11.25m wide; Industrial park's branch roads are from 7-7.5m wide.
- **Power supply:** 01 substation 110/22KV-2x63MVA in the technical infrastructure zone HTKT-1 and 01 substation 110/22KV-25MVA in the technical infrastructure zone HTKT-2

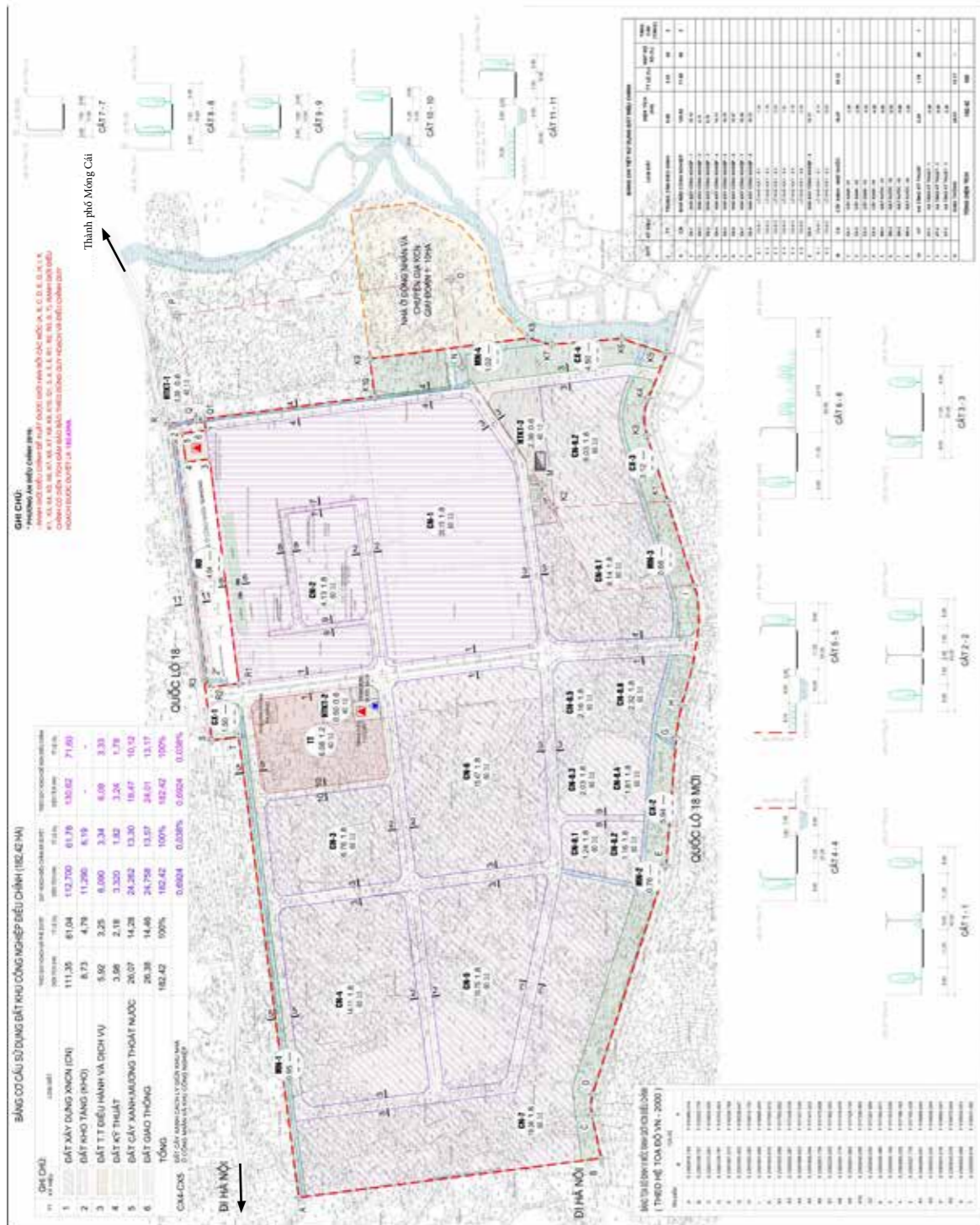
- **Water supply:** From Mong Cai water plant, being transported along National Route No. 18 to the Industrial Park's treatment station. A clean water treatment station shall be built to supply water for the entire Industrial Park with a capacity of 14,000 m<sup>3</sup>/day

### - Drainage system, waste/waste water treatment system:

- + The main drainage direction is from center of the Industrial Park to the exposed trapezoidal ditches located to the North, East and South of the Industrial Park. Inside the Industrial Park round culverts from D750 to D1500 shall collect all of rainwater inside the Industrial Park and discharge into the drainage trenches around the Industrial Park
- + A wastewater treatment station is built to the South of the Industrial Park, with a capacity of 13,000 m<sup>3</sup>/day.
- + 01 solid waste collection point is arranged.



**1:2000-SCALE SUBDIVISION PLANNING OF HAI YEN INDUSTRIAL PARK  
MAP OF LAND USE MASTER PLAN**



# DONG MAI INDUSTRIAL PARK

## I. General Information

- **Location:** Dong Mai ward, Quang Yen district-level Town, Quang Ninh province.
- **Infrastructure developer:** Viglacera Infrastructure Investment Development Company
- + **Address:** 12th Floor, Viglacera Building, No. 1 Thang Long Boulevard, Me Tri Ward, Nam Tu Liem District, Hanoi City.
- + **Tel:** +84 24 3553 7888; **Fax:** +84 24 3553 7166
- **Area:** 158.48 ha (in which area of industrial land is 116.31 ha).
- **Characteristics:** Being a multi-sector industrial park with hi-tech characteristics, with clean and environmentally friendly industries.
- **List of prioritized industries for investment attraction:** Hi-tech applications within the list of hi-techs prioritized for development; Hi-tech applications within the list of hi-tech products encouraged for development; Manufacture of industrial products to support development priorities; High tech investment, venture capital for hi-tech development, production of biotechnology products; Production of software products, digital information content products, key information technology products; Production of new materials, light construction materials, rare and precious materials, energy-saving projects, environmentally friendly projects; Production

of accessories, electronic components, electronic parts; Manufacture and assembly of automobiles, automobile spare parts, manufacture of machine tools, equipment, spare parts in service of agricultural, forestry and fishery production; Production of materials replacing asbestos materials; Production, processing of clean, environment-friendly agricultural products, with hi-tech applications; Production and refining of animal feeds, poultry and aquatic products; Production of beverage products.

## II. Regional location and relations

- **Distance from center of Hanoi city:** About 120 km.
- **Distance from center of Ha Long city, Quang Ninh province:** About 30 km
- **Road:** Located on National Route No. 18 from Hanoi City to Mong Cai International Border Gate; Linking with Hai Phong city (about 40 km from center of Hai Phong city) and Tonkin coastal provinces along National Route No. 10. Linking with Ha Long – Hai Phong highway via Dai Yen Intersection about 13 km.
- **Seaport:** About 20 km from Cai Lan port (Ha Long, Quang Ninh); About 27 km from Dinh Vu port (Hai Phong City).
- **Airport:** About 120 km from Noi Bai airport (Hanoi); About 32 km from Cat Bi airport (Hai Phong); About 80 km from Van Don airport (Quang Ninh)

# THE HIGHWAY 18



- **Railway:** Being located adjacent to Yen Vien railway (Hanoi – Pha Lai – Ha Long – Cai Lan); About 08 km from Uong Bi station (Uong Bi, Quang Ninh).

### III. Technical Infrastructure

- **Internal transport:** The industrial park's central road has a width of 57 m. Other internal roads of the industrial parks have widths of 22.5 m and 19.5 m.

- **Power supply:** From 110kV power line through the Industrial park and supply to substation /22KV-2x16MVA of the industrial park at the technical infrastructure area. 22kV power network supplies power to the Plants from the Substation via overhead power line installed on pavement of traffic roads.

- **Water supply:** Water is supplied from Yen Lap Water plant via the primary water supply pipeline along National Route No. 18 to water supply station inside the Industrial Park.

- **Drainage system, waste/waste water treatment system:**

+ Surrounding the industrial park are the ditches to collect and drain rainwater for the industrial park and adjacent areas and then discharge into the general drainage system of the area; round culverts are arranged along the road to collect and transport all rainwater inside the industrial park to the ditches; drainage pits are arranged for these sewers.

+ Wastewater from plants is collected by pump stations to transport to concentrated wastewater treatment station of the entire industrial park. The wastewater treatment

station of phase 1 (at the Technical Infrastructure area to the North of the industrial park) has a capacity of 1,100 m<sup>3</sup>/day, with an area of 01 ha; the station of phase 1 (to the South of the industrial park) has a capacity of 2.060 m<sup>3</sup>/day, with an area of 2.7 ha.

+ The daily wastes are collected and transported to concentrated treatment point of the area.

- **Communication system:** a 2000-line telephone exchange is planned at the operation center to meet communication demands of the industrial park; the exchange is connected with information network of the Area by underground optical cables.



# 1:2000-SCALE SUBDIVISION PLANNING OF DONG MAI INDUSTRIAL PARK MAP OF LAND USE MASTER PLAN



# SONG KHOAI

## Industrial Park

### I. General Information

- **Location:** Within the boundaries of following communes, wards: Song Khoai, Dong Mai, Cong Hoa, Minh Thanh – Quang Yen district-level Town, Quang Ninh province

- **Area:** 714 ha.

- **Characteristics:** Being an Industrial Park with harmonious, advanced, environmental-friendly, sustainable-development-oriented technical infrastructure system; focuses on attracting investments in industries with advanced technologies, friendly with environment; flexibly meets various requirements in terms of land use scales of investors.

### II. Regional location and relations

- **Distance from center of Ha Long city, Quang Ninh province:** About 38 km

- **Road:** Located on national route No. 18; Linking with Hai Phong city and Tonkin coastal provinces along National Route No. 10 and Hai Phong – Ha Long highway at Hoang Tan intersection (about 5km).

- **Seaport:** About 30 km from Cai Lan port (Ha Long,

Quang Ninh); About 20 km from Dinh Vu port (Hai Phong city).

- **Airport:** About 120 km from Noi Bai airport (Hanoi); About 30 km from Cat Bi airport (Hai Phong); About 80 km from Van Don airport (Quang Ninh).

- **Railway:** About 10 km from Uong Bi station (Uong Bi).

### III. Technical infrastructure

- **Internal transport:** Including the following main types: Cross section with drainage canal: Main road surface is 6.0 m wide x 2 sides, pavement 9.0 m x 2 sides, the middle drainage canalis between 12 - 30 m; Cross section without drainage canal (Cross section 5-5): has a width of 30.0m; Cross section without drainage canal (Cross section 12-12): has a width of 24.0m; Cross section passed through by the current 110 kV power line (Cross section 3-3): It has a cross section of 48.0 m wide.

- **Public transport:** Main bus routes along the primary road are arranged along the East – West direction, conveniently connects to terminal stations of the route and combines with general public transport system of the area.

- **Power supply:** In the initial phase the power supply for the industrial park is connected to 110KV double-circuit power line to Cho Roc station; in long term the power supply shall be from Yen Hung 220 kV substation; a 110/22kVsubstation with a capacity of 3x63MVA shall be constructed specifically for the Industrial park.

- **Water supply:** the main water source is from Yen Lap reservoir, supplying water through the main canal Yen Lap flowing through the planning area; In addition, at the later stage, additional water supply is from the 12 Khe reservoir in Uong Bi city leads to the planning area through the D400 pipeline and re-use the water sources of two wastewater treatment plants for irrigation, washing; Water supply headworks: Construction of 02 water supply plants for the entire industrial park, to be divided into water supply areas as follows: The western area shall be supplied with water by a water plant with a capacity of around 13,000 m<sup>3</sup> / day; The eastern part is supplied by a water plant with capacity of 14,000m<sup>3</sup> / day; The water supply network in the Industrial Park is designed as a loop system combined with dead end to ensure safe and continuous water supply.

- **Drainage system, waste/waste water treatment system:**

+ Construction of wastewater drainage system separately with the rainwater drainage system.

+ All the plants must have their own wastewater treatment system to clean the wastewater up to C limit according to Vietnam standard QCVN 40:2011/ BTNMT before being collected via separate sewer system and transported to general wastewater treatment plant of the entire industrial park to clean for the 2nd time up to B limit before being discharged into the receipt source (provided that the receipt source is not used for domestic water supply purposes) and up to A limit (if the receipt source is used for domestic water supply purposes).

+ 2 wastewater treatment stations are arranged for the Industrial Park with total capacity of 24,000 m<sup>3</sup>/day.

+ Daily wastes are collected and transported to the concentrated treatment point of the area, being the Western solid waste treatment area in Uong Bi city and Solid waste treatment center in Vu Oai commune, Hoa Binh, Hoanh Bo district; hazardous solid waste is separately transported and treated at the hazardous solid waste treatment area.

- **Communications:** Source from Quang Yen Host Exchange with a capacity of 170,000 lines, about 5km to the South of the project.



# HAI HA SEAPORT INDUSTRIAL PARK

## I. General information

- **Location:** Within administrative boundaries of 05 communes: Quang Dien, Quang Phong, Phu Hai, Quang Trung and Cai Chien of Hai Ha district
- **Area:** 4,988 ha
- **Characteristics:** Being a multi-sector Industrial park, including heavy and light industries such as: Thermal power, mechanics, textiles and textile auxiliaries, etc.; Being the combined harbor, warehouse and seaport services zone; Being a developed industrial and seaport area of a flexible character, with synchronous investment, being convenient, safe for investors, in harmony with the surrounding urban areas

## II. Regional location and relations:

- **Distance from Hanoi center:** About 250 km; About 120 km from center of Ha Long city, Quang Ninh province; About 30 km from Mong Cai International Border Gate and Bac Phong Sinh border gate.
- **Road:** Located closely to National Route No. 18, linking Hanoi – Quang Ninh (Vietnam) – Guangxi (China); located closely to Van Don – Mong Cai highway (expected to be completed in 2020)
- **Seaport:** About 70km from Fangcheng port (Guangxi – China); Hai Ha general port is being

constructed with capacity of 30 - 45 million tons/year, for anchorage of ships whose load is 80,000 DWT.

- **Airport:** About 270 km from Noi Bai Airport (Hanoi); About 45 km from Van Don airport (Quang Ninh).
- **Railway:** About 132 km from Ha Long station (Ha Long city).

## III. Technical infrastructure

- **Internal transport:** Primary roads inside the Industrial Park have a width of 42m; inter-regional roads have the largest width of 32m.
- **Power supply:** In the initial phase the province's currently available 220KV, 110KV power lines are being used; in the subsequent phase Hai Ha Thermal Power Plant with a capacity of 2,100 MW is being constructed to directly supply power to the industrial park and to supply steam for textile production. 05 intermediate substations are being constructed to directly serve the plants within the industrial park.
- **Water supply:** In the initial phase water sources are taken from Ha Coi and Tai Chi rivers by damping method; in long term water from Trang Vinh and Tai Chi Reservoirs shall be used; Raw water supply pipelines or conduits from the above-mentioned sources to the industrial park are being constructed. 02 water supply plants for the entire

industrial park are being constructed, with a total capacity of 200,000 m3/day.

- **Drainage system, waste/waste water treatment system:** The rainwater drainage system is separate from the wastewater drainage system, being operated in self-flowing mode; 02 rainwater regulators have been planned, and Khe La stream is adjusted to

create a drainage corridor. 06 wastewater treatment plants are arranged for the industrial park with total long-term capacity of 90,000 m3/day; 04 points for gathering, transshipment, exchange of solid waste, each point has a scale of 5,000 m2.

- **Communications:** Installation of 01 satellite station with a capacity of 30,000 lines.

## INFRASTRUCTURE INVESTMENT PROJECTS FOR INDUSTRIAL PARKS

# INDUSTRIAL PARK HAI HA TEXHONG

(PHASE I)

**Investor:** Texhong Vietnam Industrial Park Co., Ltd.

+ Headquarter: Hai Ha Seaport – Industrial Park

Quang Dien commune, Hai Ha district, Quang Ninh province.

+ Legal representative: Li Ke Dong.

**Location:** Within Hai Ha Seaport – Industrial Park, Hai Ha district, Quang Ninh province

**Area:** 660 ha

**Characteristics:** Being a multi-sector industrial park, mostly with multi-sector industrial plants, focused on textile finishing industry, textile and textile auxiliaries



industries; Being an industrial park with flexible development, synchronously invested with adequate infrastructures, which is able to ensure convenience and safety for the investors, as well as in harmony with adjacent urban areas and workers' quarters. Complete infrastructure including public works, services, transportation, power stations, wastewater treatment plants, clean water supply plants, steam and fuel supplies, waste collection and treatment.





## DAM NHA MAC SERVICE INDUSTRIAL PARK

### I. General information:

- **Location:** Quang Yen district-level town, Quang Ninh province
- **Area:** total area: 3,710 ha
- **Characteristics:** Being a dynamic marine economic development zone, with priority given to the development of large-scale seaport and seaport service system in association with Hai Phong seaports; maximizing land resources after construction of seaport for port service, logistics and port-related industries; It is an area that focuses on industries which require large volumes of ocean freight, supporting industries, consumer industries, seafood processing.

### II. Regional location and relations

- **Distance from center of Hanoi city:** About 115 km.
- **Distance from center of Ha Long city, Quang Ninh province:** About 43 km
- **Road:** About 25 km from National Route No. 18 from Hanoi to Ha Long – Mong Cai (Quang Ninh). Being

located on Ha Long – Hai Phong highway (about 5 km from Phong Hai intersection)

- **Seaport:** About 40 km from Cai Lan port (Ha Long, Quang Ninh); About 05 km from Dinh Vu port (Hai Phong city)

- **Airport:** About 130km from Noi Bai airport (Hanoi); About 10 km from Cat Bi airport (Haiphong); About 75 km from Van Don airport (Quang Ninh)





## NORTH TIEN PHONG INDUSTRIAL PARK

**Investor:**

North Tien Phong Industrial Park Joint Stock Company  
 + Address: Quang Trung Transaction Office Building – Vietinbank – Uong Bi Branch, Quang Trung ward, Uong Bi city, Quang Ninh province.  
 + Legal representative: Mr. Neerav Kumar Gupta.  
 + Tel: +84 203 3567 848

**Location:** Within Dam Nha Mac Industrial – Service Park. Within the boundaries of Tien Phong, Lien Hoa, Lien Vi and Phong Coc communes in seaport services, seaport, industrial and urban Area in Dam Nha Mac, Quang Yen district-level town, Quang Ninh Province.

**Area:** 1,192.9 ha

**Characteristics:** Being a seaport-industrial park complex within seaport services, seaport, industrial and urban Area in Dam Nha Mac Industrial Park, Quang Yen district-level town including the following main functions:

- + Provision of seaport services (cargo handling; cargo delivery and storage, etc.); Commercial services, logistics, warehouse and industries relating to seaports – logistics;
- + Development of the following industries: Industries which require seaport, logistics services, mechanics (automation, mechatronics, industrial electronics, etc.), metallurgy; Supporting industries, construction materials, industrial materials and energy industries; Food processing industry, textiles, footwear, intermediary industries, etc.;
- + Services for industrial purposes.

**Internal transport:** Being designed in chessboard-like model with the primary roads running along the North – South direction, average distance between the primary roads is 1,000 m (regional-level primary roads); the branch roads run parallel or perpendicular to the primary roads, distance between the branch roads is 400-600m.

**Power supply:** Power supply is from substation TM8-110KV, with a capacity of 2x63MVA; initially when the power line and 110KV substation are not yet available, it is expected to use currently available



35KV medium-voltage power line. From 110/22KV substation, a 22KV power line shall be constructed to supply to land plots inside the industrial park; 16 newly constructed medium-voltage 22KV power lines being connected at 110/22KV substation shall be arranged into 8 loop circuits for supply to the industrial park.

**Water supply:** From Yen Lap, Cam La and Lien Vi water plants. Water is supplied to the area via the pipeline running along the main road, to the function areas via booster pump stations, water towers in technical infrastructure center

**Drainage system, waste/waste water treatment system:**

+ Under planning, 03 wastewater treatment stations with a capacity of 4000 m3/day are arranged for the seaport; 12,000 m3/day for the industrial park; 8,000 m3/day for the port services area.

+ The wastewater drainage system is separate, independent from the rainwater drainage system; the wastewater drainage network comprises of pits and wastewater culverts aimed to collect and transport wastewater to the main culvert system of the common wastewater drainage network for the entire industrial park.

**Communications:** Telecommunication network shared with satellite station of Tien Phong Industrial Park with a capacity of 10,000 lines; a telecommunication network is being built according to NGN-oriented technology.

## INFRASTRUCTURE INVESTMENT PROJECTS FOR INDUSTRIAL PARKS

### SOUTH TIEN PHONG INDUSTRIAL PARK

**Investor:** Tien Phong Industrial Park Joint Stock Company  
 + Address: Savings Fund No. 3 Tower – Vietinbank – Uong Bi Branch, Group 19, block 6, Quang Trung ward, Uong Bi city, Quang Ninh province.  
 + Legal representative: Mr. Neerav Kumar Gupta.  
 + Tel: +84 203 3567 848

**Location:** Within Dam Nha Mac Industrial – Service Park, in the Southern portion of Tien Phong commune, Quang Yen district-level town, Quang Ninh province, Vietnam

**Area:** 487.4 ha

**Characteristics:** Being a multi-sector industrial development zone, synchronously invested with necessary technical infrastructures, operational center, service port, synchronous system of auxiliary works in accordance with the goals of environment protection and to ensure biophysical environment, meeting requirements of fire protection, bringing convenience and safety to the investors, as well as in harmony with surrounding areas. Infrastructure system, port facilities are arranged to serve the industrial park, along with warehouses and logistics, general utilities, standard workshops, harbors to receive anchored ships, storages, yards.

**Internal transport:** Being designed in squares with distance between the primary roads is 600-1000m, distance between the branch roads is 300-450mm

**Water supply:** Using water from Yen Lap plant. Construction of booster pumping station with a capacity of 12,000m3/day.

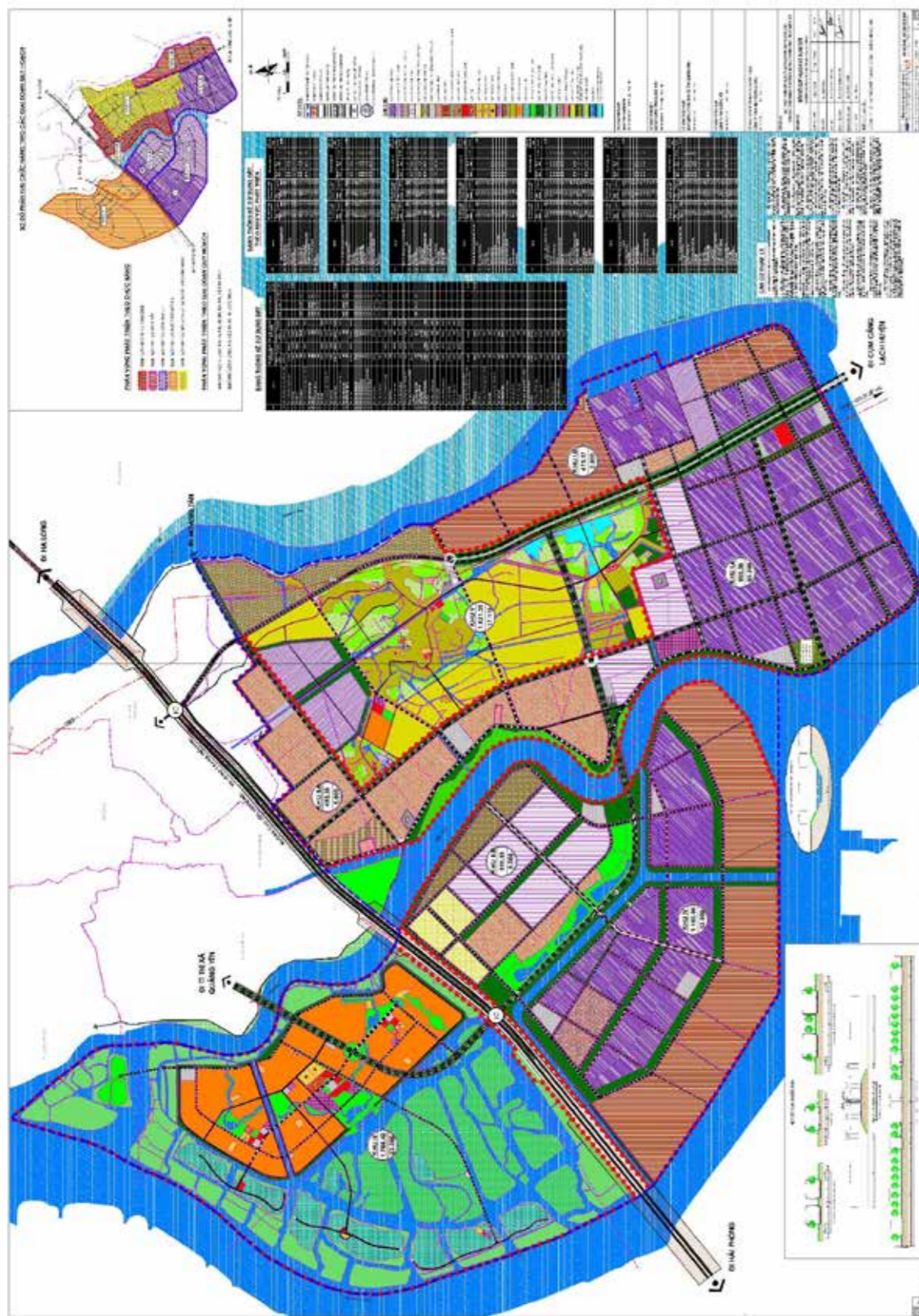


**Power supply:** Construction of 110/22kV-(40+63) MVA substation for separate power supply. High-voltage connection is carried out on 110kV power line from Cho Roc to Cat Hai. In the future a 100kV power line from Khoai River 220kV substation to the area shall be arranged according to the province's power planning.

**General wastewater treatment station:** Capacity of 10,000 m3/day.

**Waste treatment:** Classification of primary solid wastes (CTRs) is carried out at the source of emission. Classification of secondary CTRs is carried out at concentrated classification areas. The wastes are stored during the day and shall be transported to the concentrated treatment area at the end of the day. CTRs of the industrial park, after being collected, shall be transported to the province's concentrated treatment area under the planning.

**Communications:** Construction of Chanh River satellite station



## HOANH BO INDUSTRIAL PARK

### I. General information

- **Location:** In Le Loi commune, Hoanh Bo district, Quang Ninh province. Bordered by Man river to the East, bordered by Thang Long cement plant and Thang Long Thermal Power Plant to the West, bordered by Provincial route No. 328 to the South, bordered by the mountainous region of Le Loi commune to the North.

- **Area:** 136,35 ha.

- **Infrastructure developer:** Hanoi General Import – Export Joint Stock Company.

+ **Address:** 36 Hoang Cau, Dong Da District, Hanoi city

+ **Legal representative:** Mr. Vu Van Tien.

+ **Tel:** +84 24 3514 1199; **Fax:** +84 24 3514 3939

- **Characteristics:** Being a multi-sector industrial park: Information technology; electronic assembly industry; mechanical engineering; new material technology; automation technology; consumer goods industry sectors; processing of agricultural, forest and maritime products; other appropriate industries (with a limitation of industries affecting environment).

### II. Regional location and relations

- **Distance from center of Hanoi city:** About 150 km.

- **Road:** About 7 km from Ha Long – Van Don highway via Huu Nghi intersection.

- **Seaport:** About 15 km from Cai Lan port (Ha Long, Quang Ninh); about 40 km from Dinh Vu port (Hai Phong city).

- **Airport:** About 150km from Noi Bai airport (Hanoi); About 50 km from Cat Bi airport (Haiphong); About 40 km from Van Don airport (Quang Ninh).

- **Railway:** About 15 km from Ha Long station (Quang Ninh).

### III. Technical infrastructure

- **Technical infrastructure criteria:** in accordance with provisions in QCVN 07:2016/BXD (National technical standards on technical infrastructure works issued in attachment to circular No. 01/2016/TT-BXD dated 01/02/2016 of Ministry of Construction).

- **Land usage indicator:** in accordance with provisions in QCXDVN 01:2018/BXD (National technical regulations on construction planning issued in attachment to circular No.04/2008/QD-BXD dated 03/04/2008 of Ministry of Construction).



## DEVELOPMENT PLANNING FOR INDUSTRIAL PARKS TO 2025

### DONG TRIEU INDUSTRIAL PARK

**Location:** In Hong Thai Dong commune, Dong Trieu district-level town, Quang Ninh province.

**Area:** 150 ha

**Characteristics:** Hi-tech, clean industrial park



### COAL SUPPORTING INDUSTRIAL PARK

**Location:** In Mong Duong commune, Cam Pha City, Quang Ninh province.

**Area:** 400 ha

**Expected investment attractions:** Mechanical engineering and repairing equipment of the coal industry; mechanical industry to manufacture equipment for construction industry, etc.



# QUANG NINH PROVINCE'S ECONOMIC ZONES

- 01 Van Don Economic Zone  
Area: 217,133 ha
- 02 Mong Cai Border Gate Economic Zone  
Area: 121,197 ha
- 03 Hoanh Mo - Dong Van Border Gate Economic Zone  
Area: 14,236 ha
- 04 Bac Phong Sinh Economic Zone  
Area: 9,404.79 ha



## VAN DON Economic Zone

**1. Establishment decision:** Decision No. 120/2007/QĐ-TTg dated 26/7/2007 of Prime Minister

**2. Scope, boundaries:**

- Comprises of the entire Van Don district, Quang Ninh province.
- Bordered by the sea area of Tien Yen and Dam Ha districts to the North; bordered by Co To district and the Gulf of Tonkin to the Southeast; bordered by Cam Pha city, Ha Long City and Ha Long Bay to the West.

**3. Area:** Natural area: over 2,171 km<sup>2</sup>, in which the natural land area is over 581 km<sup>2</sup>, sea area is 1,589 km<sup>2</sup>

**4. Development principles:** (i) human development, improvement of people's livelihood are the main focus; (ii) Reform of the growth model, economic restructuring, development of green economy, entertainment industry are orientation; (iii) Reform of institutions, mechanisms, policies and models to create a breakthrough; (iv) infrastructure development, comprehensive administrative reform, development of high quality human resources as a basis; (v) Knowledge-based, innovate and hi-tech economy acts as driving force; (vi) Maintaining social and political stability, ensuring security and national defense as the key missions

**5. Objectives**

Make Van Don Special Administrative – Economic Unit to become green, modern, smart urban island; dynamic economic center for development of new, advanced sectors with focus on high-end service and tourism complex, advanced entertainment industry with casinos, hi-tech industries; center of startup, innovation and international trade of the ASEAN - China Economic Corridor; environmentally friendly development model, streamlined administrative apparatus, institutions, mechanisms and policies are ready for global competition at the highest level; Effectively exploit the potential of differentiation, great opportunities, attract investment resources, actively attract and gather creative resources, new and advanced management modes; nurture new driving force for development and to promote growth so that Quang Ninh can truly become the economic hub of the Northern region, the role model for the region and the entire country; ensure national defense – security to contribute to the maintenance of independence, sovereignty and territorial integrity. By 2050, Van Don will become a driving force for development, a city worth living in with the symbol

of a green city for knowledge, rising to the leading group of green cities with its unique architecture.

**6. Orientation of the economy:** Focus on the three economic spearhead that are luxury tourism - culture, Modern services and High technology.

**(1) Tourism, culture comprise of:** Service, tourism and entertainment complex with casinos; International prize-winning entertainment center; Ecotourism, cultural tourism; luxury resorts; cultural industry;

**(2) Services comprise of:** Airport and airfreight business; Logistics; Seaport services and yachting center; Financial and commercial services.

**(3) High technology focuses on:** Application, research and development of high technology; Manufacture of hi-tech products; Processing pharmaceutical products, bio-preparations, pharmaceuticals; Production of renewable energy, clean energy, rare and precious materials; Creative industry.

**In addition to key and prioritized sectors, there are auxiliary sectors including:** Smart urban construction; Sustainable development and anti-climate change; Financial advisory services; Training, research and development of nurseries; Medical, educational systems of international standard; To develop traditional industries along the lines of hi-tech, modern equipment and services to create products linking services and tourism.

**7. Road:**

- 190 km from center of Hanoi city
- 85 km from Hai Phong city
- 45 km from center of Ha Long city,
- 80 km from Mong Cai city
- 150 km from Fangchenggang City (China)
- In addition to that, Van Don's geographical location allows rapid connection by road system to the Red River delta (National Routes No. 10 and 18); to the Northwestern Region via Lang Son (National Route No. 4B), to the South of China (Guangdong, Guangxi) via National Routes No. 18A, 18C, 4B and Hanoi – Hai Phong – Ha Long – Van Don – Mong Cai highway (all completed before 2020) thus it is capable of quick access to and developing relations with the main hubs.



**8. Seaport**

- Cai Rong port acts as a combined port and Van Hoa port is included in list of Vietnam seaport system, being planned as a local combined port. Additional marinas are also planned to serve high-quality sea/island tourism.
- Van Don has many potentials in construction of tourist port and yachting center, being located within international seaport group of Hai Phong – Quang Ninh (Vietnam) – Fangcheng (China), suitable for sea tours (from Van Don to the ports of Hainan (China) is about 200 nautical miles, 580 nautical miles from Hong Kong and 1,300 nautical miles from Singapore).

**9. Airport**

- Van Don airport
- About 200 km from Noi Bai airport (Hanoi);

- About 95 km from Cat Bi airport (Hai Phong);
- About 1-2 hour flight from economic, financial and tourist centers (Nanning, Shanghai, Hong Kong, Macau, Shenzhen, Hainan, Taipei); about 4 – 5 hour flight from Asian capitals: Beijing (China), Seoul (Korea), Tokyo (Japan), Singapore, Kuala Lumpur (Malaysia), Jakarta (Indonesia), Abu Dhabi (UAE), New Delhi (India) (which is suitable for development of international tourism and trade); accounting for 60% of population and 40% of GDP of the world.

**10.** Being approved and designated by the Central Government to experimentally establish Van Don Special Administrative – Economic Unit (one of the first three Special Administrative – Economic Units of Vietnam).



**QUANG NINH**  
INTERNATIONAL AIRPORT

HUYỆN VẠN ĐƠN - TỈNH QUẢNG NINH  
 ĐIỀU CHỈNH CỤC BỘ QUY HOẠCH CHUNG XÂY DỰNG KHU KINH TẾ VẠN ĐƠN  
 TẠI KHU VỰC XÃ ĐOÀN KẾT, BÌNH DÂN VÀ ĐÀI XUYỀN, HUYỆN VẠN ĐƠN - TỈNH QUẢNG NINH  
 ĐẾN NĂM 2020 VÀ TẦM NHÌN ĐẾN NĂM 2030  
**SƠ ĐỒ QUY HOẠCH SỬ DỤNG ĐẤT**



- KÝ HIỆU
- ĐẤT CÔNG CỘNG
  - ĐẤT TRUNG TÂM Y TẾ
  - ĐẤT KHU CBO
  - ĐẤT ĐƠN VỊ Ở
  - ĐẤT Ở HIỆN TRẠNG
  - ĐẤT THƯƠNG MẠI - DỊCH VỤ
  - ĐẤT HỖN HỢP
  - ĐẤT CƠ QUAN HÀNH CHÍNH
  - ĐẤT TRUNG TÂM NGHIÊN CỨU - ĐÀO TẠO
  - ĐẤT TRƯỜNG HỌC
  - ĐẤT CÔNG NGHIỆP
  - ĐẤT BÀN BAY
  - ĐẤT DỊCH VỤ HỖN HỢP BÀN BAY
  - ĐẤT DU LỊCH
  - ĐẤT AN NINH QUỐC PHÒNG
  - ĐẤT CÂY XANH KHU Ở
  - ĐẤT CÂY XANH CÔNG VIÊN, TDTT
  - ĐẤT CÔNG VIÊN CHUYÊN DỤNG
  - ĐẤT CÂY XANH CẢNH QUAN
  - MẶT NƯỚC (AO, HỒ, ...)
  - ĐẤT HẠ TẦNG KỸ THUẬT
  - NGHĨA TRANG
  - ĐẤT ỨNG DỤNG PHÁT TRIỂN
  - RANH GIỚI LẬP QUY HOẠCH



## MONG CAI BORDER GATE ECONOMIC ZONE

**1. Establishment Decision:** Decision No. 19/2012/QĐ-TTg dated 10/4/2012 of the Prime Minister.

**2. Scope, boundaries:** Comprises of the entire Mong Cai city (including 17 subordinate administrative units, being the following wards: Tra Co, Tran Phu, Ka Long, Ninh Duong, Hai Yen, Hai Hoa, Binh Ngoc, Hoa Lac and Hai Tien, Van Ninh, Hai Dong, Quang Nghia, Vinh Thuc, Vinh Trung, Hai Son, Hai Xuan Bac Son); Hai Ha Seaport – Industrial Park (including 3 administrative units, being the following communes: Quang Dien, Quang Phong and Phu Hai); Hai Ha town and Quang Thang, Quang Thanh, Quang Minh, Cai Chien communes (Hai Ha district)

**3. Area:** The entire economic zone's natural area is about 121,197 ha, in which land area is about 66,197 ha and sea surface area is 55,000 ha.

**4. Characteristics:** Center for economic development, trade, tourism, services and seaport of Northern midland and mountainous region, of Gulf of Tonkin Economic Belt and linking to Kunming Economic Corridor (China); located in an important position in terms of security and national defense of the Red River delta and the entire country.

**5. Development objectives:** To become a sustainable and dynamic economic growth pole of Quang Ninh province and Northern key economic region, to become an economic zone with synchronous and

modern infrastructure and comprehensive services network; international tourist center, a key national tourism destination; with synchronous and modern facilities, diversified tourism products; material, cultural and spiritual lives of the population shall be constantly improved; national defense – security are ensured, to become a formidable defense line to protect national sovereignty and border.

**6. Model and spatial structure of the economic zone**

- Model and spatial structure shall be developed under the "01 axis – 02 regions" scheme (North and South) with 03 centers (01 nucleus being the new integrated urban area (Administrative center) and 02 dynamic centers which are Hai Ha Seaport – Industrial Park and Mong Cai Border City).

- Spatial structure is divided into 05 primary development areas: (1) Zone A: Mong Cai city (dynamic center); (2) Zone B: Hai Ha area (dynamic center); (3) Zone C: New Administrative, General Services Center (the nucleus); (4) Zone D: Southern Sea/Island Tourism Area (Southern area); (5) Zone E: Border trade and new rural development area (Northern area). In each area there shall be functional subdivisions including: International border gate area; industrial park; financial center; urban areas, residential areas and other functional areas.

**7. Primary technical infrastructure priorities to be finished by 2020:**

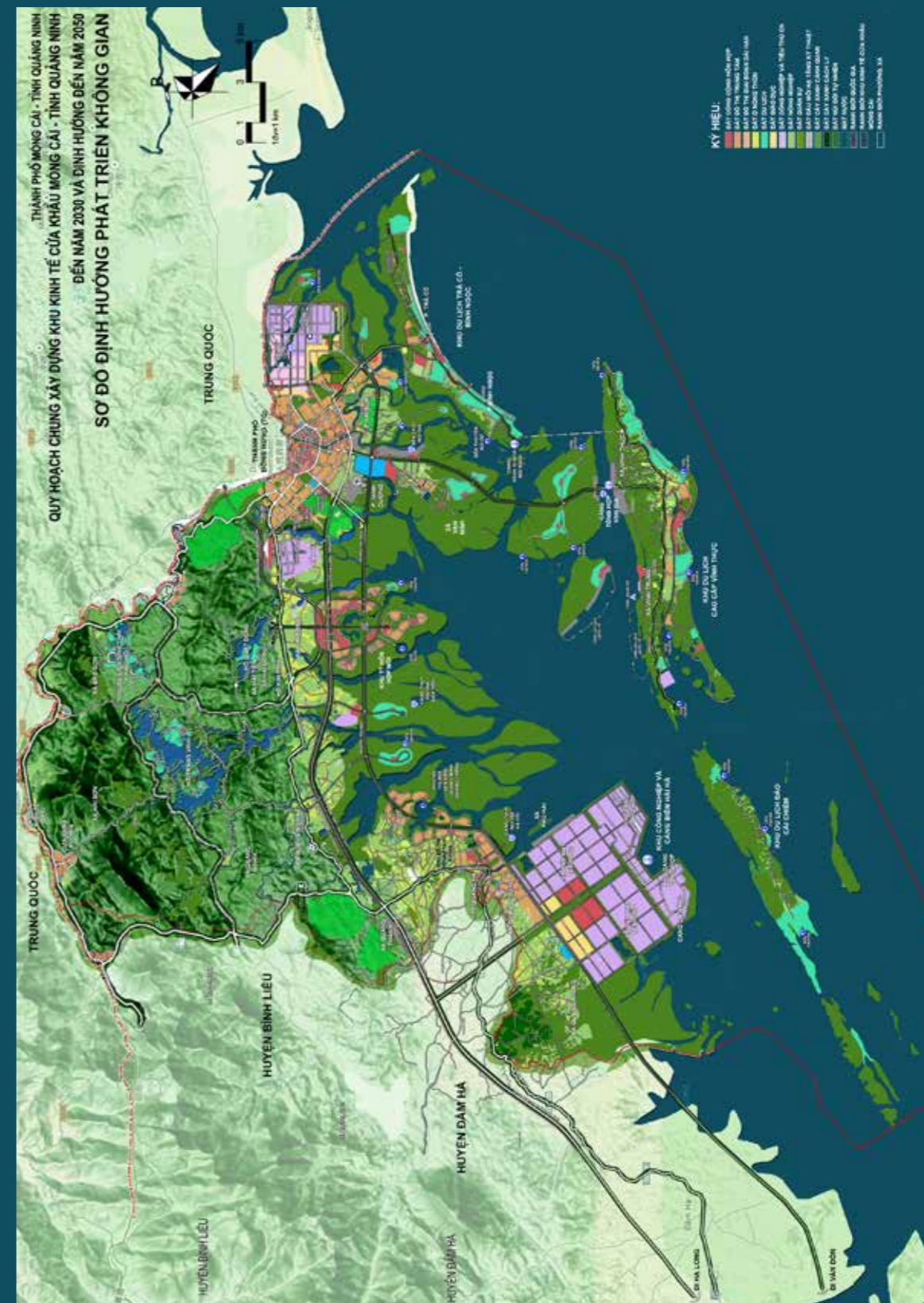
Bac Luan II Bridge access road system; road linking Quang Ha town with Hai Ha Seaport – Industrial Park; Hai Ha port (phase I), upgrade of Van Gia Port to a capacity of 1,000,000 tons/year; upgrade, innovation of the the border belt route; construction of military ports in islands in a combination of economic development with national defense - security; Construction of the following works: Quat Dong Water plant with a capacity of 68,000 m3/day; Quang Minh water plant with a capacity of 10,000 m3/day; Cai Chien water supply station: 500 m3/day. Upgrade of Van Gia water supply plant up to the capacity of 1,000 m3/day, upgrade of capacity for Hai Ha 1 and Hai Ha 2 water plants to a total capacity of 120,000 m3/day; Construction of Thermal power plant in Hai Ha with a capacity of 900 MW (phase I); 220 KV power line and substation in Hai Ha (2x250) MW and Mong Cai (1x250) MW; construction of new 110 KV substations in Bien Mau (2x63) MW, Hai Dong (2x40) MW. Construction of 22 KV underground power cable from Vinh Trung commune - Vinh Thuc Island to Cai Chien Island; Construction of 5 wastewater treatment plants in Mong Cai city with a total capacity of 64,000 m3/day; 22-ha Quang Nghia Solid Waste Treatment Complex in Quang Nghia commune; Mong Cai Park Cemetery with an area of 25 ha.

**8.Road:** National Route No. 18 is the arterial road linking Mong Cai Border Gate Economic Zone with the provinces in Red River delta and Northern midland and mountainous region; Currently the Van Don – Mong Cai Highway is being constructed; About 200 km from Hanoi city (via the highway); About 140 km from Ha Long City (via the highway); About 40 km from Bac Phong Sinh Border Gate, about 80 km from Hoanh Mo Border Gate; About 70km from Fangchenggang city (China).

**9. Seaport:** By 2020 Van Gia port shall be upgraded to the capacity of 1,000,000 tons/year and there shall also be inland wharves for small vehicles in Dan Tien and along Ka Long River; About 40 km from Hai Ha seaport; About 140 km from Cai Lan port (Ha Long, Quang Ninh).

**10. Airport:** About 140km from Van Don airport (Quang Ninh); About 300 km from Noi Bai international airport (Hanoi); About 175 km from Cat Bi airport (Hai Phong).

**11. Railway:** Studies are being carried out for the construction of new Ha Long – Mong Cai railroad, construction of a branch linking Long – Mong Cai railroad with Hai Ha seaport; construction of 03 main stations within the Economic Zone: Quang Ha, Mong Cai and the port terminal.





# HOANH MO DONG VAN

## BORDER GATE ECONOMIC ZONE



**1. Establishment decision:** Decision No. 115/2002/QĐ-TTg dated 13/9/2002 of the Prime Minister.

**2. Boundaries:** Including administrative boundaries of Hoanh Mo commune and Dong Van commune, Binh Lieu district, Quang Ninh province

Bordered by Fangcheng area, Fangchenggang city, Guangxi province, People's Republic of China; Bordered by Huc Dong commune, Binh Lieu district and Quang Son commune, Hai Ha district to the South; Bordered by Quang Son commune, Hai Ha district to the East; Bordered by Dong Tam commune, Binh Lieu district to the West.

**3. Area:** Total natural area: about 14,236 ha.

### 4. Characteristics:

- Being a multi-sector economic zone, the economic, cultural, service and tourism center of the border area to the North of Quang Ninh province.
- A comprehensive urban area with modern architectural space, with its unique identity and assurance of the criteria of type-V urban.
- Being the international trade center and important transport hub of Northern mountainous region, Gulf of Tonkin economic belt; convenient for attraction, promotion of investments due to synchronous technical – socio infrastructures of the border gate area.

### 5. Spatial development orientation

- The space along National Route No. 18C and Hoanh Mo – Dong Van primary route shall be developed into urban areas and functional subdivisions, to become a concentrated construction zone. Industrial – commercial centers (non-tariff) shall be formed along Hoanh Mo – Dong Van route; combined commercial service areas shall be constructed in attachment to Hoanh Mo border gate, Hoanh Mo center and Dong Van border gate.

- The low – hill region adjacent to Hoanh Mo – Dong Tam, Dong Van – Khe Tien routes, low land funds adjacent to the concentrated construction zone shall be arranged with production areas under farm model, they also act as reserve area for long-term development.

- The high mountain ranges are covered with protection forest, in order to preserve natural landscapes, to create sustainable eco frame. Undeveloped land has steep slopes, the areas adjacent to protection forest are tightly controlled, construction activities there are restricted in order to create a continuous green system.

**6. Functional subdivisions:** Being divided into 03 zones which are the concentrated construction zone, integrated agriculture and forestry development and reserve zone, natural landscape management and conservation zone.

### 7. Road:

- Connecting to National Route No. 18 via National Route No. 18C at a point about 40 km away.

In addition to that there is also provincial route No. 341, Dong Van – Quang Ha route (upgraded onto provincial route to connect Hai Ha, Ha Long – Mong Cai highway, National Route No. 18A, its scale meets the requirements of level-IV mountainous road), border corridor (along Bac Luan – Bac Son – Quang Son – Dong Tam – Vo Ngai direction connecting to Lang Son province, level-V road), border patrol road.

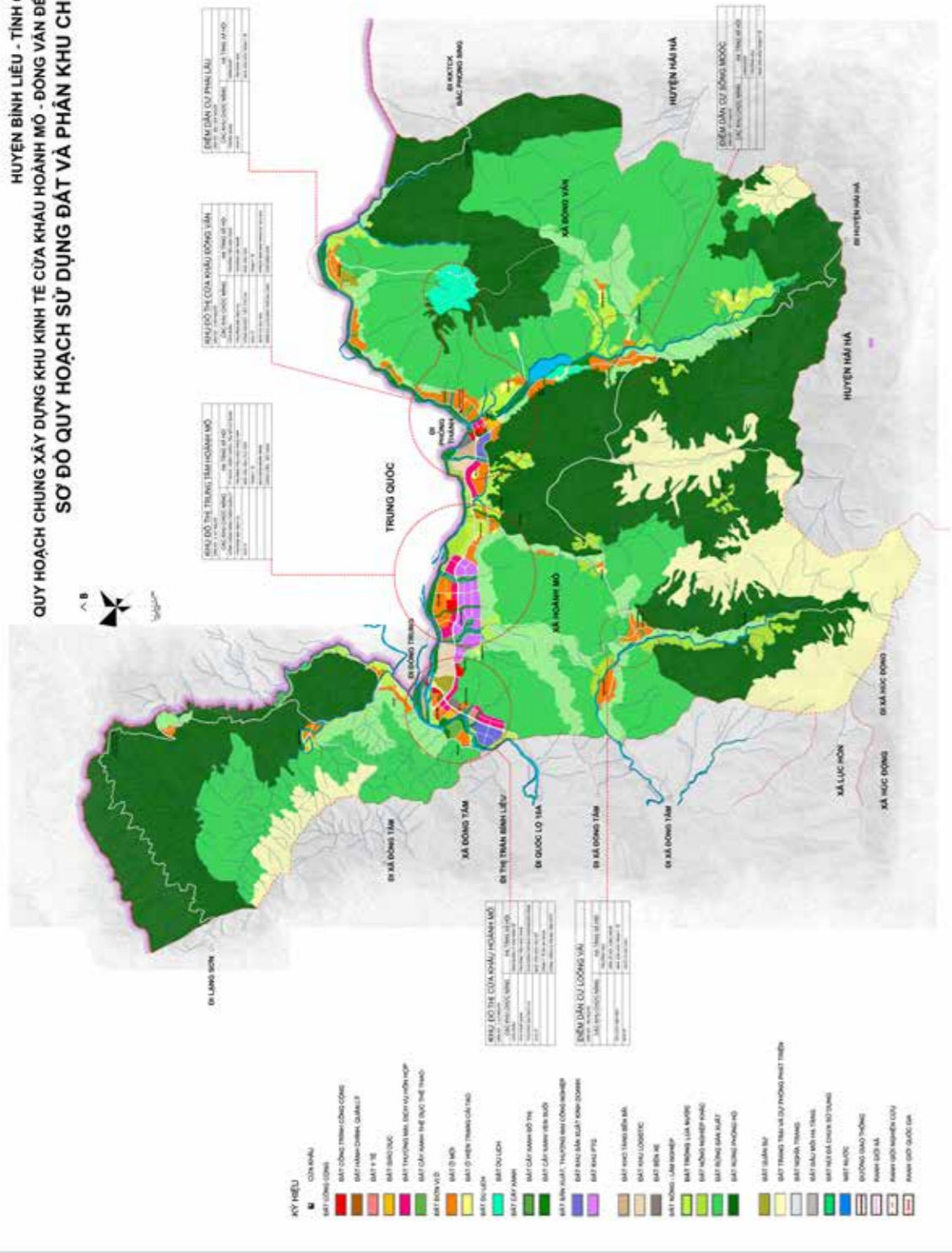
- Urban transport: Central main road connects Hoanh Mo border gate with National Route No. 18C with a cross section of 40m, Hoanh Mo – Dong Van central main road: upgrade of current road's cross section to 40m, inter-regional roads linking functional subdivisions have a cross section of 20.5 m – 26 m.

- About 280 km from Center of Hanoi City; About 80 km from Mong Cai International Border Gate; About 40 km from Bac Phong Sinh Border Gate.

**8. Seaport:** About 45 km from Hai Ha seaport (Capacity: 30-45 million tons/year, it is expected to approve vessels whose gross ton is up to 80,000 DWT to anchor); About 134 km from Cai Lan port (Ha Long, Quang Ninh).

**9. Airport:** About 100 km from Van Don airport (Quang Ninh); About 270 km from Noi Bai international airport (Hanoi); About 160 km from Cat Bi international airport (Hai Phong).





## BORDER GATE ECONOMIC ZONE BAC PHONG SINH

- 1. Establishment Decision:** Decision No. 115/2002/QĐ-TTg dated 13/9/2002 of Prime Minister.
- 2. Scope:** Comprises of the entire Quang Duc commune of Hai Ha district, Quang Ninh province.
- 3. Area:** About 9,404.79 ha.
- 4. Development orientation:** New development orientation of commercial service urban area in association with developing Bac Phong Sinh border gate; Upgrading and innovation of Quang Duc commune center in association with development of cottage industries, logistics, etc.
- 5. Road:** Connect to National Route No. 18 by provincial route No. 340 at a point about 16 km away; About 300 km from center of Hanoi city; About 40 km from Mong Cai International Border Gate and Hoanh Mo Border Gate.
- 6. Seaport:** About 30 km from Hai Ha seaport (Capacity: 30-45 million tons/year, it is expected to approve vessels whose gross ton is up to 80,000 DWT to anchor); About



165 km from Cai Lan port (Ha Long, Quang Ninh).

**7. Airport:** About 320 km from Noi Bai airport (Hanoi); About 190 km from Cat Bi airport (Haiphong); About 130 km from Van Don airport (Quang Ninh)

*Bac Phong Sinh Border Gate area has been approved with Detailed Construction Planning in 1:2000 scale (within Bac Phong Sinh Border Gate Economic Zone), according to which:*

**1. Area:** 4,351,100 m<sup>2</sup>

**2. Boundaries:** Bordered by Fangcheng, Guangxi province, China to the North; Bordered by Tai Phat pass, Quang Duc commune to the South; bordered by Hai Son commune, Mong Cai city to the East; bordered by Van Toc pass, Quang Duc commune to the West

**3. Characteristics, functions:** Being a general economic zone with focus on development of trade; service and tourism, processing industry; along with Hoanh Mo – Dong Van Border Gate Economic Zone, support Mong Cai Border Gate Economic Zone to ensure continuity of activities along the clusters of Border Gate Economic Zones; Being a Border urban area with harmonious urban space, synchronous technical infrastructure with its own identity; Being the place to attract, promote investment and trade activities on the basis of system of synchronous border gates; being an important transport hub centering around Hai Ha district and Gulf of Tonkin Economic Belt

**4. Fuctional subdivisons:**

- **Subdivision I:** Border gate center, with an area of 89 ha

- **Subdivision II:** Eastern rural – urban residential area, with an area of 109 ha

- **Subdivision III:** New urban area – warehouse, yard, tourism, service complex, with an area of 238 ha



**MAP OF LAND USE MASTER PLAN FOR BAC PHONG SINH BORDER GATE AREA**

